



Commodore's Corner May 2021

Hello all hope you are all keeping warm as we move into our colder months.

The April club weekend was fished and some good fishing was had. Groper, bluenose, bluecod and even a snapper was caught. (No Kahawai over 2.5kg were caught, so this will roll over for our next competition weekend.)

Our club tractor is currently out of commission with some problems with the rear lift, hopefully it will be back in action soon.

The take a kid fishing trip is on for some lucky kids next Friday, let's hope they get smooth seas.

The Cape Palliser Marine Radio Association AGM is to be held at the South Wairarapa Workingmen's Club on Thursday 20th May at 7.00pm, please attend this meeting if you are able as this Association is a huge asset to us as boaties, Divers & Fishermen.

Only 2 more Club weekends left for this season so get out there & give it a go.

Our AGM date 25th July, the committee is proposing to join NZ Sports Fishing Council. All members who wish to vote on this will need to attend so they can vote. Also we are proposing to start a photo measure for kingfish and kahawai & will be discussing this and a vote on it at the AGM.

Further to our AGM, Liz Warren, our secretary/Treasurer is retiring & we will need someone to replace her, so if you are keen, please contact Liz for a brief rundown on the job. Anyone interested in standing for a spot on the committee, please don't be shy in putting your hand up/getting someone to nominate & second you, it is a rewarding job & we only meet once a month.

Commodore Heath

Valued Sponsors:

Forest Management (N.I.) Ltd.

Hollings First	Gary and Liz Warren	Premier Bacon
Ticehurst Timber	Liquorland Masterton	South Wairarapa Groomers
EV's Bar	Select Signs	Catt Electrical & Engineering LTD
Mark's Signs	Carter's Carterton	Fagans Masterton
Broadway Barbers Carterton	Western Auto Mart	Carters Masterton
Liquorland Masterton	Cory's Electrical Masterton	Dave Wilton
The Offering Cafe Greytown	Auto Electrical Services	Fresh Choice Greytown
Masson's Carterton	Jaycar	Hunting and Fishing Masterton
The Workshop Carterton	Alleva	Jaycar Electronics
Pan Pacific	BOC GAS	Neils Autos Kuripuni
MTF Finance Masterton	Donaghys	Still Shop Greytown
Reppo	Pioneer N.Z.	Buckhorn Bar & Grill
Ashdown	Keinzley Agvet	Liquor King Masterton
Lins Autos	Wrightson Seeds	Ewen Glass
HBC Technology	Merial N.Z.	Carters Masterton
Ewen Glass	Plumbing World	Neils Autos
Stirling Sports	Western Auto Mart	BP Martinborough
Resene Masterton	Valley Plumbing	Pukemanu Tavern
Wurth	Norwoods Masterton	Mitre 10 Martinborough
Dawes Construction	Mimico Industries	Tom Wilsons Motors
Subway Masterton	Plumbing World Masterton	Carters Masterton
Wild Blue Tackle	G. Boyd	Martinborough Motels
Chris Simmonds Building	Bunnings Petone	Pain & Kershaw
Janice & Ian Warren	Allan Cundy Sparkies Electrical	ITM Crightons

Just A note to ALL TRACTOR KEY HOLDERS. Once you have finished with the tractor & parked it up, PLEASE LOCK IT UP. Commodore Heath



Stefan Telford with a nice groper caught off White Rock. Look at the Glassy conditions!! 😊

West Coast Snapper



A management review of snapper on the west coast of the North Island is pending. Fisheries New Zealand have been collecting data for the past couple of years. That data seems to support anecdotal evidence that this Snapper 8 fishery has rebuilt to a much healthier level than what it has been since the 1980s. In anticipation of a consultation process, our New Zealand Sport Fishing Council fisheries team has been involved in preliminary discussions with Fisheries New Zealand, coastal hapū and local interests. We expect FNZ's consultation process will get underway soon, we will keep you informed of progress.



Finally found out why the fish were't biting..



**Pukemanu Boating and Fishing Club Results
8/9 May 2021**

1st Chris Oakly
2nd Heath Riddell
2rd Leisa Riddell

Heaviest Blue Cod:
Charlie Baldwin 2.41

Heaviest Terakihi:
Owen Riddell 2.05

Average Angler:
Owen Riddell 334.13

Heaviest Fish:

No change from last club day



Radio Watch Channel 4.

First call up from 7.30 am

WeighMaster.

**Brendan and Liz Walker 33 Grey Street
Martinborough 06 306 9615**

**Next Club weekend 19th &
20th JUNE**

**CONTACT DETAILS FOR COMMITTEE
MEMBERS:**

Commodore Heath Riddell 0274 822 404
Vice Commodore Tony Kerr 0274 987 991
Club Captain Owen Riddell 0212 404 308
Sec/Treasurer Liz Warren 027 304 9689
Editor Wiremu Telford 0274 494 759
W/masters Liz & Gaffer 0274 476 991
Gavin Hodgekiss 0272 468 641
Charlie Baldwin 0272 441 602
Shane Baldwin 021 515 039
Warwick Anderson 0220 725 349
Chris Simmonds 0272 433 489
Rob Glanville 0275 600 092



Are we daunted by depletion?

It can be quite scary when you realise that we don't know much about what is happening at sea or the state of our fish stocks. That's because there's not enough onboard cameras or observers to monitor at-sea activity.

What's more, 56 percent of targeted fish stocks in the Quota Management System (QMS) have never had a stock assessment, usually due to a lack of available research funding. This means the status of many fish stocks is unknown. This is particularly concerning given that destructive fishing methods such as bottom trawling and dredging are still permitted in inshore waters, the most productive nursery grounds. We have been able to get away with insufficient monitoring and data collection because Kiwis have been repeatedly told that New Zealand has a world leading QMS. What is not well understood is that after 34 years of the QMS we now have a system focused on the total weight of dead fish landed at the wharf, largely ignoring how many fish die in the process of fishing and how many are left swimming. We must change our focus if we aspire to rebuilding our depleted inshore fish stocks. Research shows that Kiwis care about fish depletion and habitat destruction. They want to resolve the serious issues affecting our marine environment so that all New Zealanders can benefit from the commercial use of our natural resources, especially our fish.

LegaSea and the New Zealand Sport Fishing Council are seeking public support for positive changes to how our marine estate is managed and protected. The [Rescue Fish policy package](#) has been developed as an alternative to the QMS. Rescue Fish is based on strong principles and the Maori concept of kaitiakitanga, guardianship of the resources and the people. Transparency is also critical to ensuring ongoing public support for positive change. Rescue Fish seeks to [address management issues](#) while generating wealth and jobs in regional New Zealand.

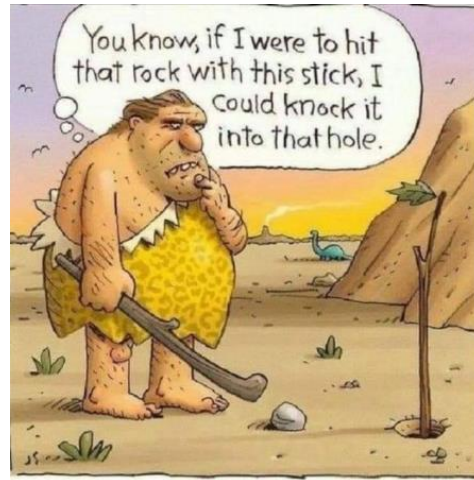


HEAVIEST FISH 2021 Season

Barracoutta	Jacob Warren	5.62
Blue cod	Liz Warren	3.02
Blue Nose	Leisa Riddell	4.85
Groper	Chris Oakly	29.52
Gurnard	Terry Liggett	1.37
John Dory	Chris Simmonds	2.72
Kahawai	Ricky Aburn	2.96
Kingfish	Charlie Baldwin	11.27
Red Cod	John Crawford	3.58
Terakihi	Chris Simmonds	2.62
Trumpeter	Gary Warren	9.21
Snapper	Ian Warren	3.22
Tuna	Liz Warren	8.89



Photos above from Commodore Heath. Bottom photo looks like a type of large krill? At first glance they look like juvenile Crays? I wonder where the whales were?? Great to see .



How Man Learned to Swear.



Boys own Adventure.

By Peter Beech

Mark Telford and his mate Tit Lyford came down from the Bush for a Sounds adventure, (unfortunately Mark's eldest son Matthew & Scott from Auckland were unable to come at the last minute.) We loaded the old Tutanekai up and headed off for Hoiere, (Pelorus Sound.)



Waikawa Bay wharf, about to set off

We stopped for a dive & a fish to catch a feed of blue cod for tea off Cape Jackson , then

steamed into Cook Strait , headed through Allen Strait & around to Wakatahuri.



Mark had a dive for Wild Greenlip mussels off one of his "secret spots". ☺ they were big, fat & tender!



We have just passed through Allen Strait, on our way to Wakatahuri

Wakatahuri, with its big slipway and large boat building shed is a wonderful place to explore. Old Claude Wells had fifteen kids and they all became good boat builders.



This slipway is still used today.

They built many of the sounds fishing and farm boats, back in the 1950/60's & turned it into a ship wrecking yard. Ships would be anchored out in the bay & all fittings & items of value were removed. Once stripped the hulks were towed by ocean going Tugs to HongKong for scrapping.



The anchor Mark has his hand on is from the Sailing ship "Lastingham" which came to grief on the western side of Cape Jackson September 1st 1884 at the very end of her voyage from London to Wellington .

Unfortunately the Wells whanau were unsure of the names of the ships the other anchors had come off, lost to the past & memory



Piles of Anchor chain & fittings were everywhere

The yard is strewn with nautical relics, old anchors, winches, fairleads, cabin tops, and there are old boat engines, mainly Listers, driving all the equipment, slipway, welder, breaking down saw, large band saw, lathes, thicknesser.



Heavy duty thicknesser.



An historic bandsaw, once used for building the many wooden boats that were constructed at Wakatahuri



Tit was amazed at all the old, big heavy machines that are still working, after 70 plus years of use.

There is the bones of an old coaster on the beach with a broken back. I can't remember it's name, my cousin did tell us & Mark wrote the name down, but lost the piece!

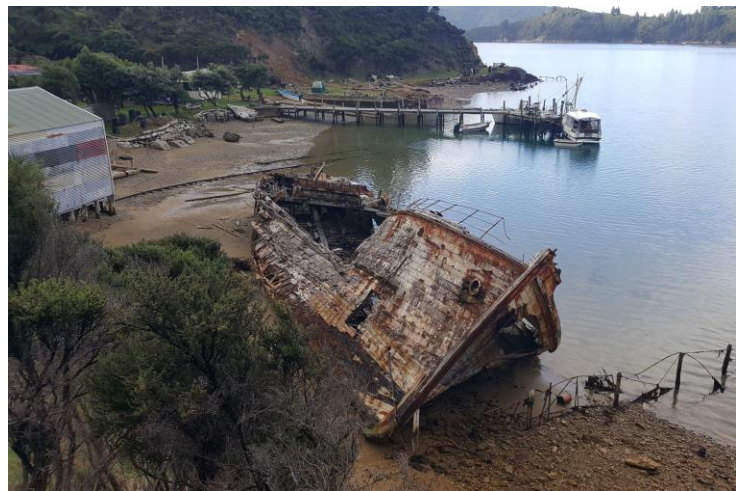


Photo taken from the hill above the coaster. Tutanekai on the wharf in the background



This photo is of the same Ship, taken from ALLIANCE back in the late '90's (. I was on a dive/fishing trip to D'Urville Island. ED.)

My cousin said I suppose you roosters want to have a poke around the old shed ? He took us in and started up an old Lister stationary engine that looked 100 yrs old , we looked at each other thinking that thing will never go, well it lit up and next thing all these flat belts started whistling around our ears , a flat belt up to an overhead layshaft with belts coming in all directions driving all the boat building machinery. All 3 of us ducked for cover and folded our arms before we got tangled up.



This old LISTER engine still runs & powers all the machines in the Boat building shed, using numerous flat belts that once in operation, whistle around at a rate ok knots,

The Wells boys are restoring one of their grand fathers old Torpedo sterned launches in the shed.



No, this is'nt the bow, it's the stern...

All 3 of us were in awe of this place , it was like stepping back in time. We thanked the guys for an awesome visit & steamed out of the bay & headed for Worlds End in Tennyson Inlet, arriving just on dark.

This inlet is amazing, the early bushmen reckoned that it was that remote it felt as if they were at the "End of the World. " There are no houses, no people , no roads, no telephone poles and no pine trees, you awake and find yourself surrounded by native bush and birds, good for the soul.



Bacon, Eggs, tomatos, toast & a cuppa, ready for a new day....Stand back!

Mark & Tit cooked a big breakfast and we headed around to visit some friends of Mark's at Wilson Bay, A great couple who's whanau have farmed since 1881. We had a shower and freshen up, it was interesting looking around the big old 6 bedroom homestead and listening to their oral histories.



Wilson Bay wharf which Trevor Foote, Mark, Curla & Sam Gray, & 2 others rebuilt about 18 months ago.



Kelly Foote holding a photo of their family farm. Trevor & Kelly are very passionate about the Farm, it's history & it's future.

They are survivors in a harsh farming environment & have had to adapt to make the farm viable. Visitors from the Pelorus Mail boat call almost every day for a guided tour of the Woolshed & parts of the farm. They have had up to 60 visitors in one day which amazed the three of us. They also have two homesteads for hire so if you are keen for a breakaway from the humdrum of Town living, have a look at their website www.holidayhomes.co.nz

We then head up into Nydia bay to look for an old boat last reported to be in the bay, The Merlin. We pulled up and were met by an old couple who were pretty defensive of their privacy, until they recognised me, hadn't seen them for 40 yrs, they delighted in showing us around their wonderful property,



There were treasures everywhere, untouched for years, bones of old sounds launches, old wheel houses in the bush, old boat engines, old lighting plants, Petters, Listers, old landrovers (Tit was all over them)



Recovered prop off the wreck of the Jane Douglas which sank between D'Urville island & Stephen's Island after striking Saddle rocks 22nd Jan 1912. You can see the big chunk out of one of the blades where it smacked the rocks. The ship sank very quickly.



Ships winches on the beach at Nydia Bay, Pelorus.

The highlight was coming across the bones of the old "Merlin, " built by Ernest Burg in ship Cove around 1900, she was upside down in the paddock, her bow was sprung and her back was broken,



Above & below The Tired old hull of the MERLIN

The old boy said if you think you can fix her up you can have it. But sadly she was past the point of no return.



The broken bow of the old Merlin



Even an old Drag line in the scrub, Pete & Tit were keen to "kick it in the Guts" & get it going



Above, Pete & Tit standing by the stern of the old launch Strombolli

However there is a lovely old hull of an old Logan yacht called the Strombolli that belonged to the Moletta whanau at Putaki a farm on D,Urville Is, that is possibly still restorable, for an enthusiast with a big heart and a big wallet. (there is a book called Angelina, which covers this whanau's history & mentions this launch.)

Below, Tit at the bow of the Strombolli, Beechy reckoned this launch could be salvaged, if you're brave enough? ☺





Another old derelict launch amongst the ferns.



A wheel house off some long forgotten Sounds boat



But wait there's more! Two more derelict boats, parked up & left to rot..

We steamed back out to Port Ligar for the night and after tea and a quiet beer, we were reflecting on our experiences and talked about how nice it is to visit beautiful places like Worlds End, but the most memorable experiences are of meeting very interesting

people who have interesting stuff and interesting life stories.



Sentinel Rock, Nor'East of the Chetwode Islands, Cook Strait Fishing was very disappointing considering it's position.

Crack of dawn the next morning we steamed out for a fish on the way home at a rock on the edge of Cook Strait called Sentinel rock, very vigorous fishing, caught our quota in very short order, (x2 per person.) fish of size or just under, which is a sign that even remote spots like these have been thrashed and the fish we caught would have been all throw backs, there were no big fish. Mark wanted a couple of good sized fish for the smoker, but was disappointed only average fish could be landed in such an isolated & promising site.



Beechy & Tit wondering if a cold beer was in order?

We then headed for Home and were surfing along with a big Norwest swell, I said to Mark, "Glad we're not heading into this, then Tit said, where's our dingy gone, the tow line had parted company,

We punched our way back and couldn't even see the dingy until we were nearly on top of it. (makes you wonder what chance you'd have of finding someone lost overboard in a big sea !)

Tit took the helm going around Cape Jackson where with wind against the tide we encountered half a dozen huge swells, "old" Tit took it in his stride, Mark and I were standing out on end of the bow sprit and when the old boat surfed down the big swells we had water up to our knees !

Good way to wash the decks !

We went ashore at Little Waikawa and the boys found half a dozen Nautilus shells to take home as souvenirs .



What can I say? Almost the end of a very memorable trip.

We moored upon a sheltered spot in Endeavour inlet for the night , had a sleep in the next morning and had a lazy cruise back with plenty of time to unpack before the boys caught the ferry home. Great adventure, very lucky with the weather.

(Thank you Pete & Tit for an awesome voyage, Ed.)

**Ill never forget the
look on the cashiers
face, when she
scanned the packet of
bird seed,
And I asked her how
long does it take for
the birds to grow once
I plant them.**

New Chilly Bins for SALE



price list for chilly bins.

100 L = \$ 300

125 L = \$ 400

150 L = \$ 450

Contact by TXT 02113 20917

**You drop something
when you were younger,
you just pick it up.**

**When you're older and
you drop something, you
stare at it for a bit
contemplating if you
actually need it
anymore.**

Duct Tape is **NOT** the solution to **EVERY** problem!



A reminder to all our members.

Pukemanu Boating & Fishing Club requires ALL members to belong to the Cape Palliser Marine Radio Association.

Please ensure you have paid your fee, if you have'nt, please go to WWW.cpmr.org.nz



Remember as you slide down the great bannister of life, there are gonna be people who are splinters in your butt. Pick em out and SLIDE ON!!!



REALLY?

It's a toe truck